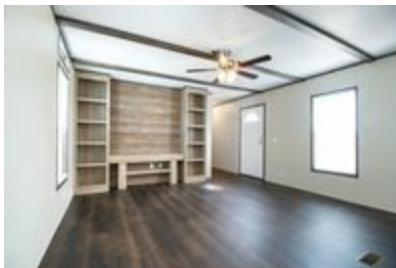




## ANNIVERSARY 16682A



### **ANNIVERSARY 16682A** Model number: 31ANN16682AH20

**2 beds • 2 baths • 1088 sq.ft. • 16' width • 68' depth**

Our home building facilities invest in continuous product and process improvements. Plans, dimensions, features, materials, specifications and availability are subject to change without notice or obligation. Renderings and floor plans are representative likenesses of our homes and may differ from the actual homes. We invite you to tour a Home Center near you and inspect the highest value in quality housing available or call (325) 698-0183 to speak with a Home Consultant. Copyright 2017, CMH. All rights reserved.

<https://www.claytonhomesabilene.com>

### CLAYTON HOMES- ABILENE

1050 N CLACK  
ABILENE, TX 79603

Monday - Thursday: 9am - 5:30pm  
Friday: 9am - 5:30pm  
Saturday: 9am - 5pm  
Sunday: Closed

(325) 698-0183



# ANNIVERSARY 16682A



## ANNIVERSARY 16682A Model number: 31ANN16682AH20

**2 beds • 2 baths • 1088 sq.ft. • 16' width • 68' depth**

Our home building facilities invest in continuous product and process improvements. Plans, dimensions, features, materials, specifications and availability are subject to change without notice or obligation. Renderings and floor plans are representative likenesses of our homes and may differ from the actual homes. We invite you to tour a Home Center near you and inspect the highest value in quality housing available or call (325) 698-0183 to speak with a Home Consultant. Copyright 2017, CMH. All rights reserved.

<https://www.claytonhomesabilene.com>

### CLAYTON HOMES- ABILENE

1050 N CLACK  
ABILENE, TX 79603

Monday - Thursday: 9am - 5:30pm  
Friday: 9am - 5:30pm  
Saturday: 9am - 5pm  
Sunday: Closed

(325) 698-0183